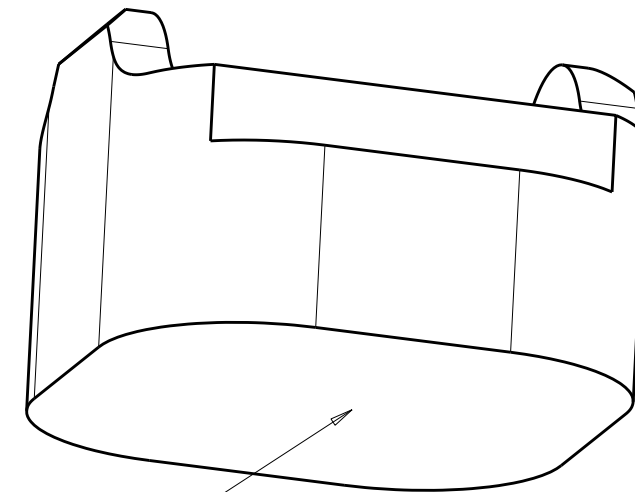
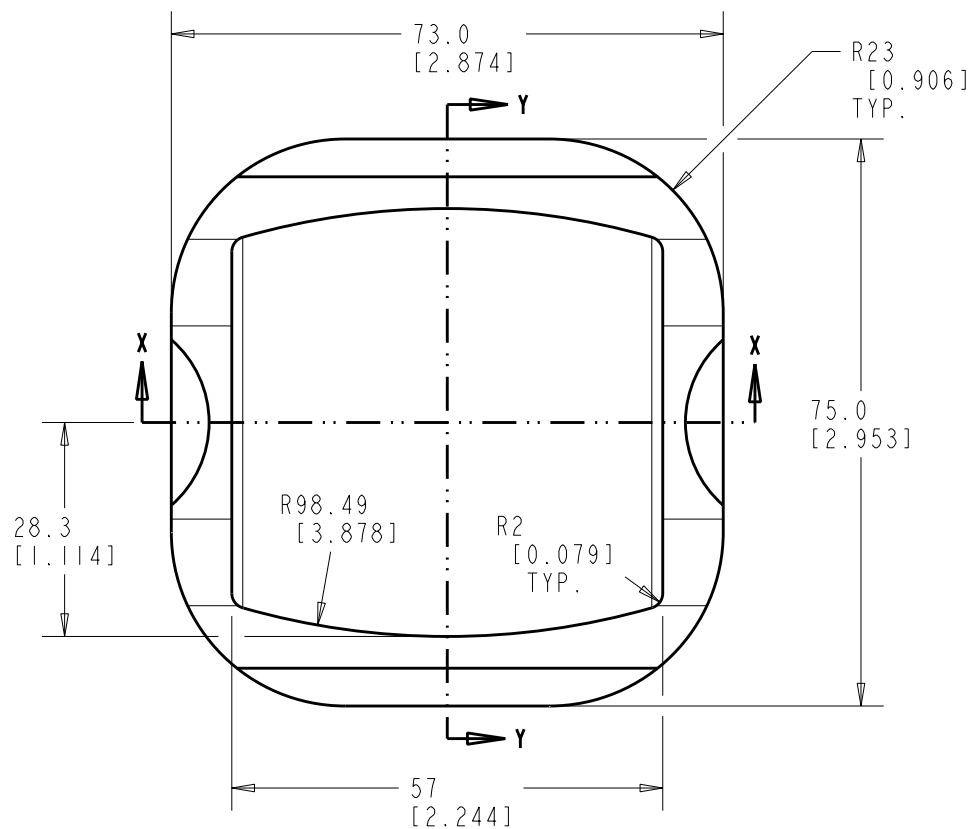
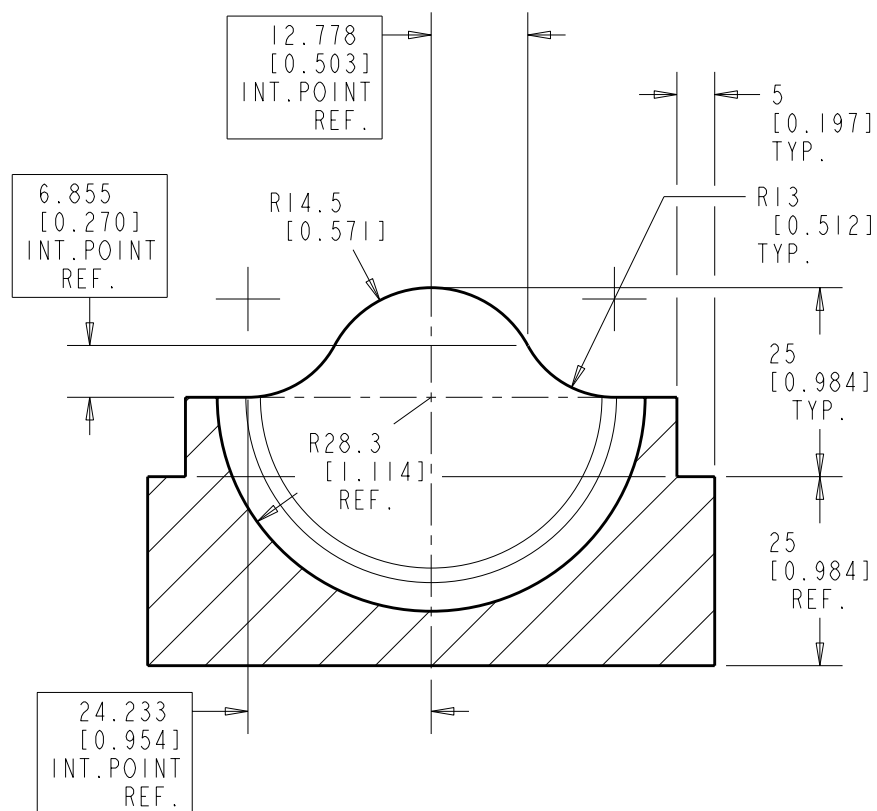
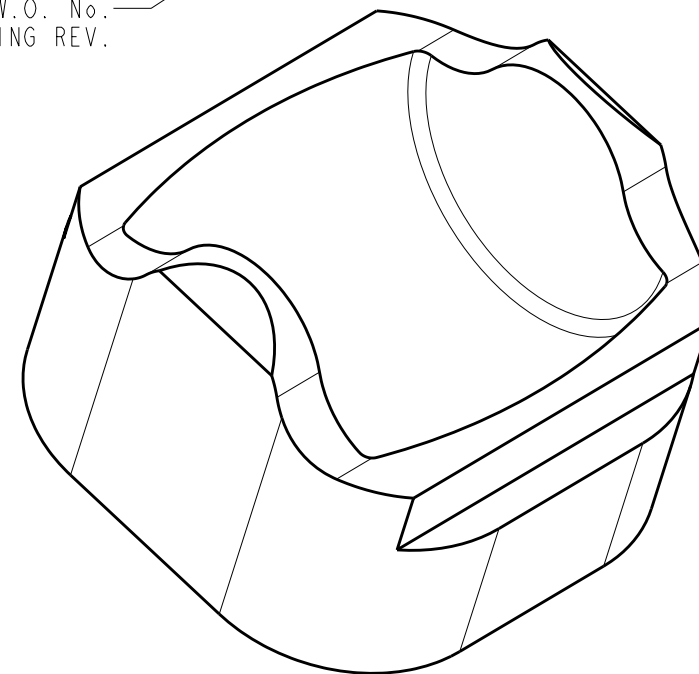


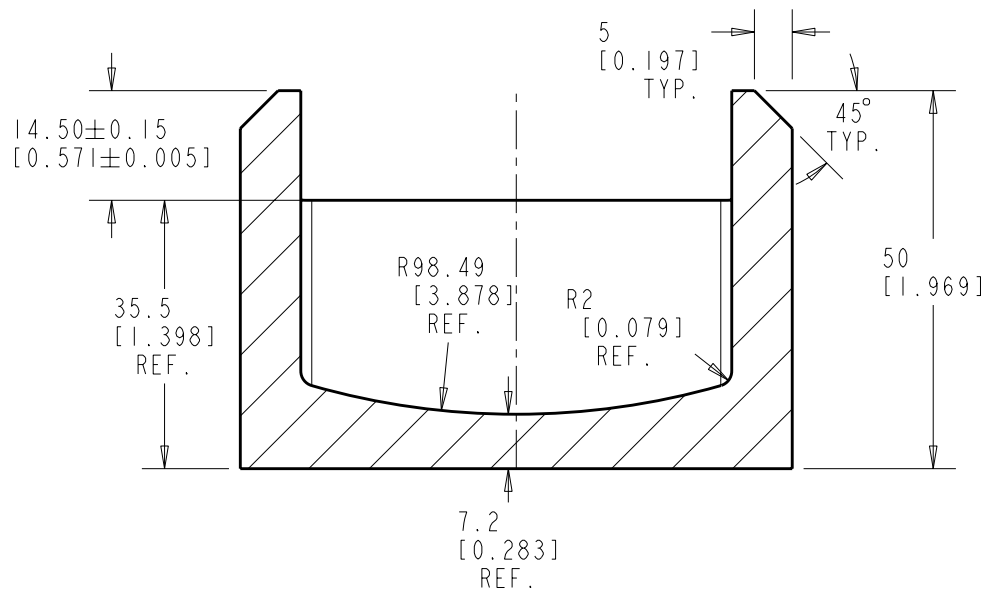
- NOTES:
 1. DIMENSIONS ARE EQUI-SPACED ABOUT CENTRE LINES.
 BOXED DIMENSIONS ARE TO RADIUS INTERSECTIONS.
 2. MATERIAL SPECIFICATION; STEEL - BS 3146 CLASS 5A,
 NORMALISED, HARDENED & TEMPERED IN ACCORDANCE WITH BS 3146.



ETCH P/No. & W.O. No.
 & DRAWING REV.



SECTION Y-Y



SECTION X-X

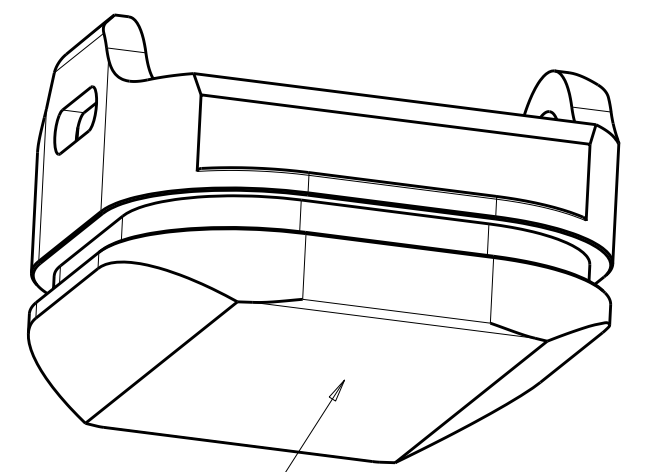
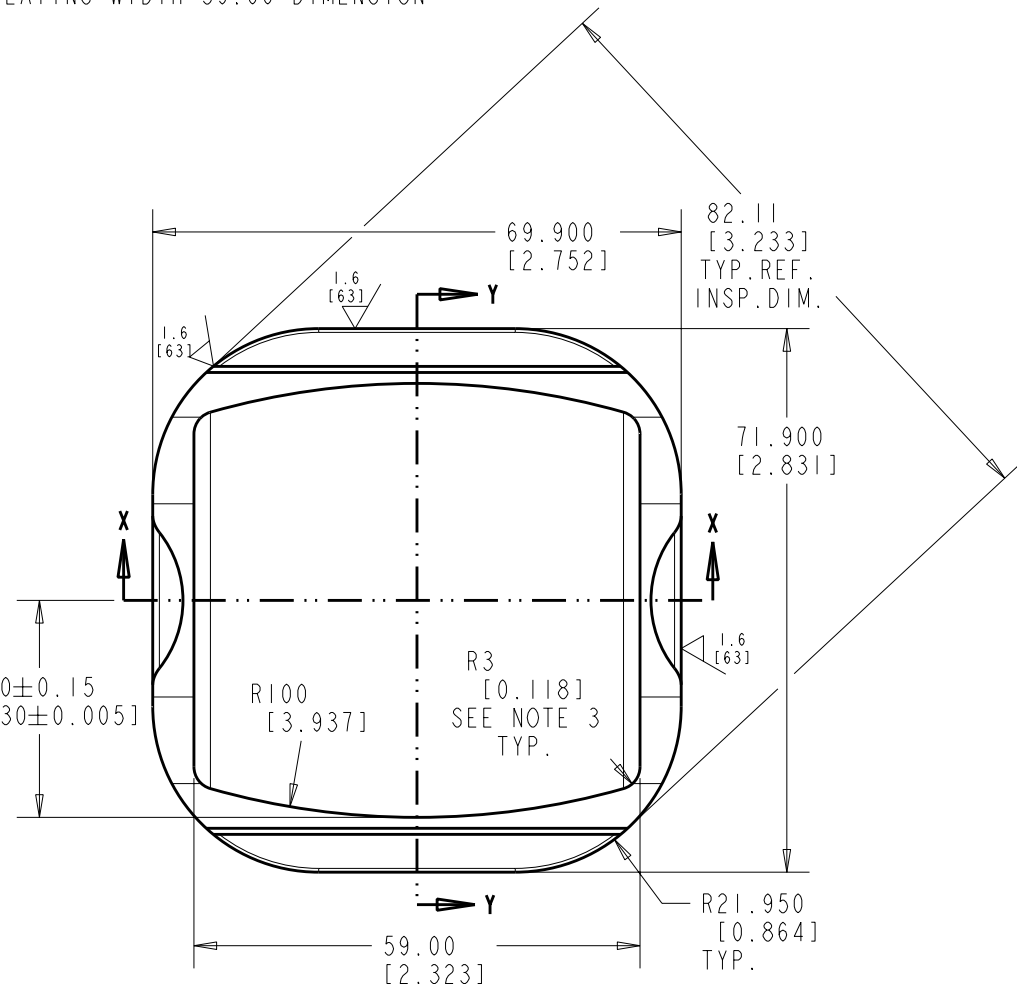
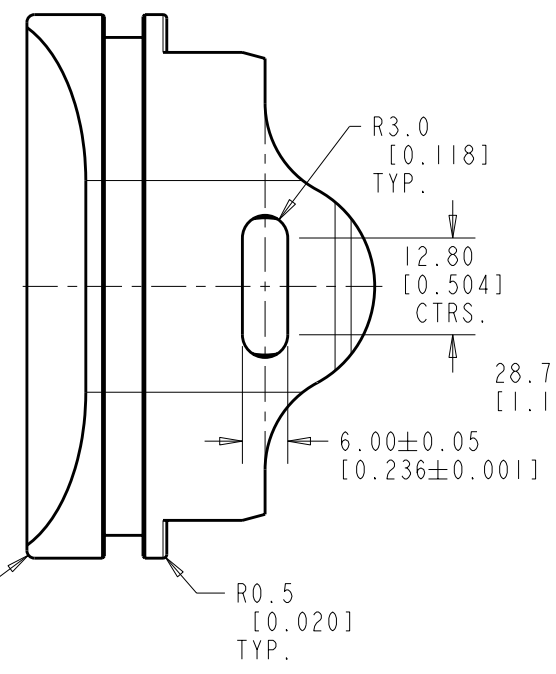
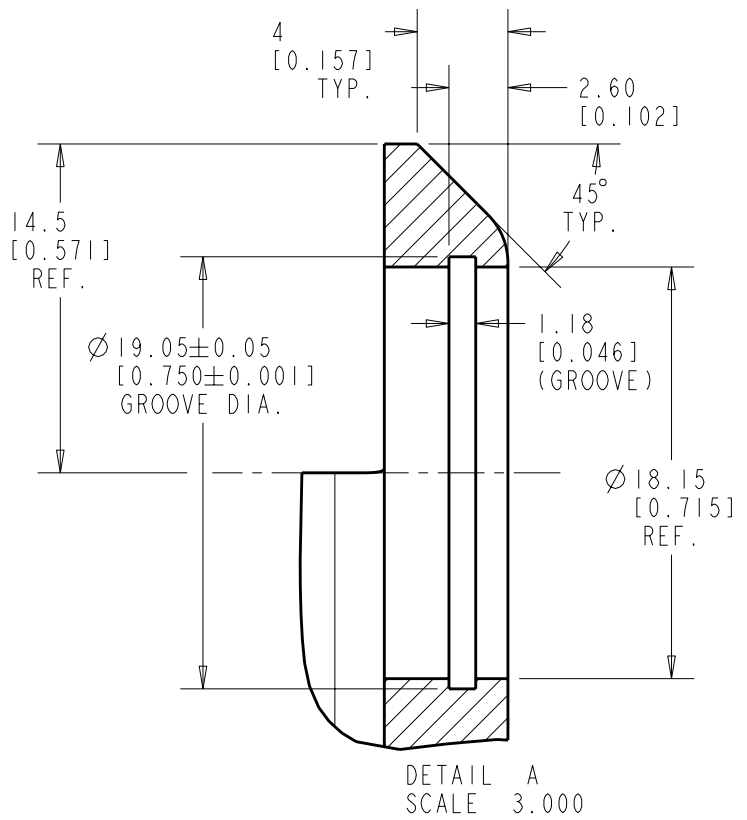
00000	A	24-03-05	watsonkx	evansjx	--
ECN No	REV	DATE	BY	CHECK	REASON FOR REVISION / CHANGE

DRAWING STANDARDS	
DRAWING UNITS mm [inch]	TOLERANCES (DRIVEN BY METRIC SIZE)
	METRIC SIZE IMPERIAL EQUIVALENT
SCALE: 1.000	X ±0.500 [X.XXX ±0.020]
	X.X ±0.350 [X.XXX ±0.014]
	X.XX ±0.080 [X.XXX ±0.003]
3RD ANGLE	X.XXX ±0.025 [X.XXX ±0.001]
	ANGULAR X ±3° X.X ±0.5°
MATERIAL WS-252 : LOW ALLOY STEEL CASTING 125ks	COATING NONE
MODEL REVISION / VERSION A / 5	

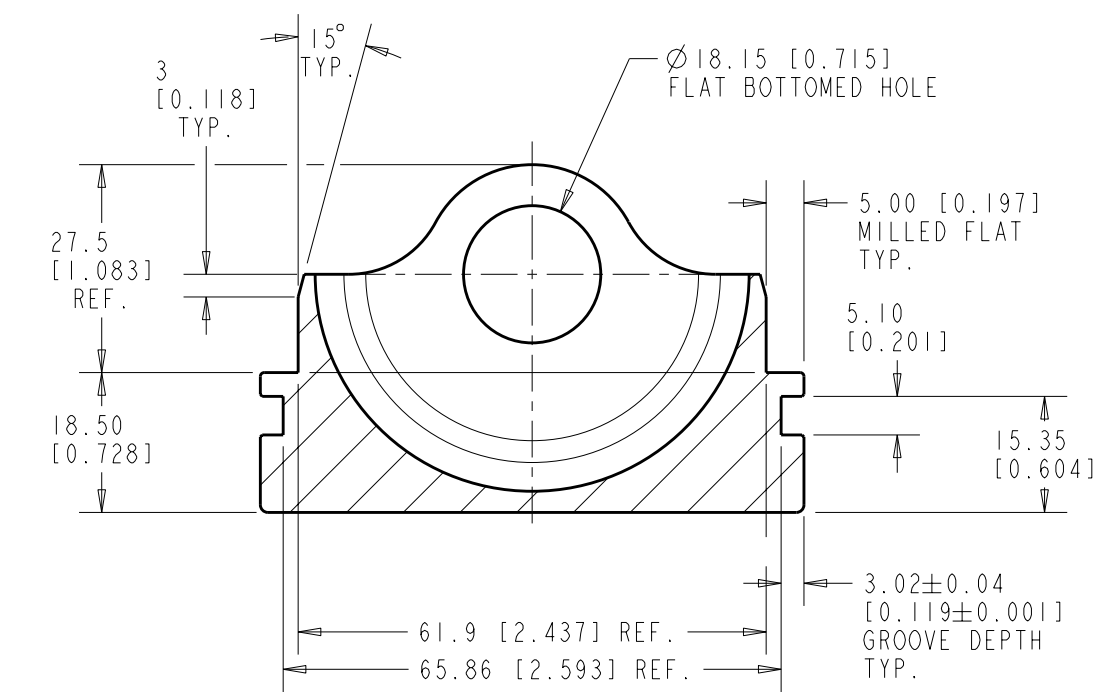
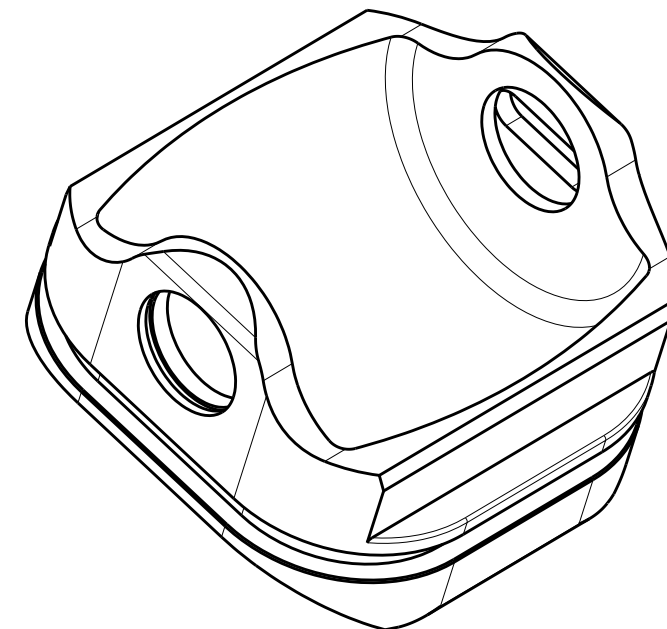
DRAWN BY/DATE watsonkx/24-03-05	SHEET 1 OF 2
CHECKED BY/DATE evansjx/05-04-05	
APPROVED BY/DATE -/-/-	WEIGHT 0.896

© Weatherford 2010. All rights reserved. This document is copyrighted and whether containing patentable or non-patentable subject matter is and comprises the proprietary and confidential information of Weatherford International Ltd, and by receiving this document the recipient agrees that this document is loaned in confidence with the understanding that neither it nor the information in it will be reproduced or disclosed, in whole or in part for any purpose except the limited purpose for which it is loaned. This document and any facsimiles hereof shall be returned to Weatherford International Ltd upon demand.		
TYPE MD	PART NO. 00791983	REV A
DRAWING NO. 572-5502-003-252		
TITLE / DESCRIPTION ROLLER CARRIER f/ 5.5" ACE TOOL w/ NEW RETENTION		

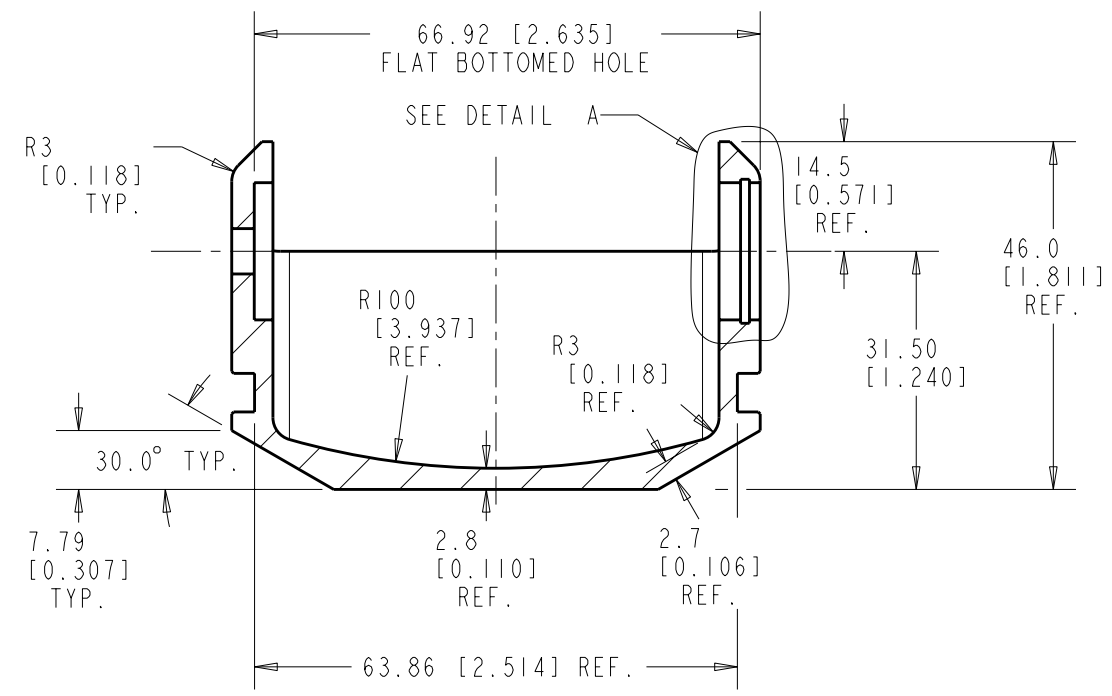
NOTES:
 1. PART IS MACHINED FROM CAST BLANK, SEE SHt.1
 2. DIMENSIONS ARE EQUI-SPACED ABOUT CENTRE LINES.
 3. R2 AT CORNER OF R98.49 & WIDTH 57 ON INSIDE OF CASTING (SHt.1) IS MODIFIED TO R3 WHILST MAKING THE R100 & CREATING WIDTH 59.00 DIMENSION (ALL DIM'S WITHIN NOTE ARE REF.)



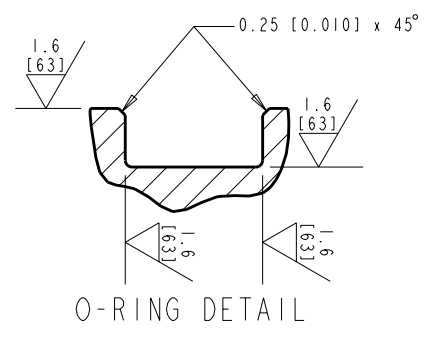
ETCH P/No. & W.O. No. & DRAWING REV.



SECTION Y-Y



SECTION X-X



O-RING DETAIL

DRAWING STANDARDS						Weatherford®		© Weatherford 2010. All rights reserved. This document is copyrighted and whether containing patentable or non-patentable subject matter is and comprises the proprietary and confidential information of Weatherford International Ltd, and by receiving this document the recipient agrees that this document is loaned in confidence with the understanding that neither it nor the information in it will be reproduced or disclosed, in whole or in part for any purpose except the limited purpose for which it is loaned. This document and any facsimiles hereof shall be returned to Weatherford International Ltd upon demand.	
DRAWING UNITS		TOLERANCES (DRIVEN BY METRIC SIZE)		MATERIAL		DRAWN BY/DATE		SHEET	
mm [inch]		METRIC SIZE	IMPERIAL EQUIVALENT	WS-252 : LOW ALLOY STEEL CASTING 125ks		watsonkx/24-03-05		2 OF 2	
SCALE: 1.000		3RD ANGLE		COATING		CHECKED BY/DATE		TITLE / DESCRIPTION	
		ANGULAR X ± 3° X.X ± 0.5°		--		evansjx/05-04-05		ROLLER CARRIER f/ 5.5" ACE TOOL w/ NEW RETENTION	
00000	A	24-03-05	watsonkx	evansjx	--	APPROVED BY/DATE	WEIGHT	PART NO. 00791983	
ECN No	REV	DATE	BY	CHECK	REASON FOR REVISION / CHANGE	---	0.494	DRAWING NO. 572-5502-003-252	
								REV A	