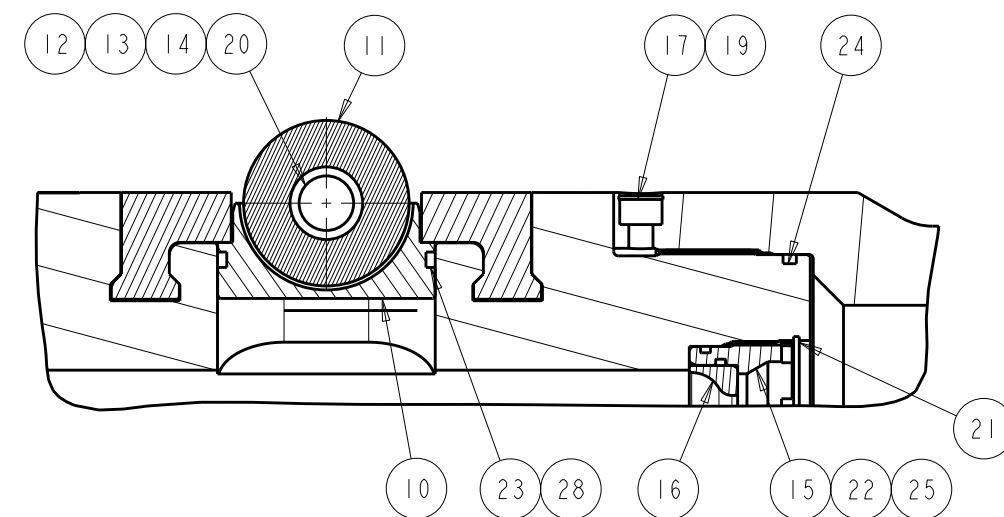
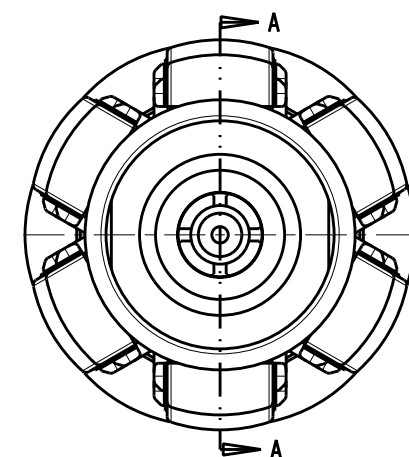
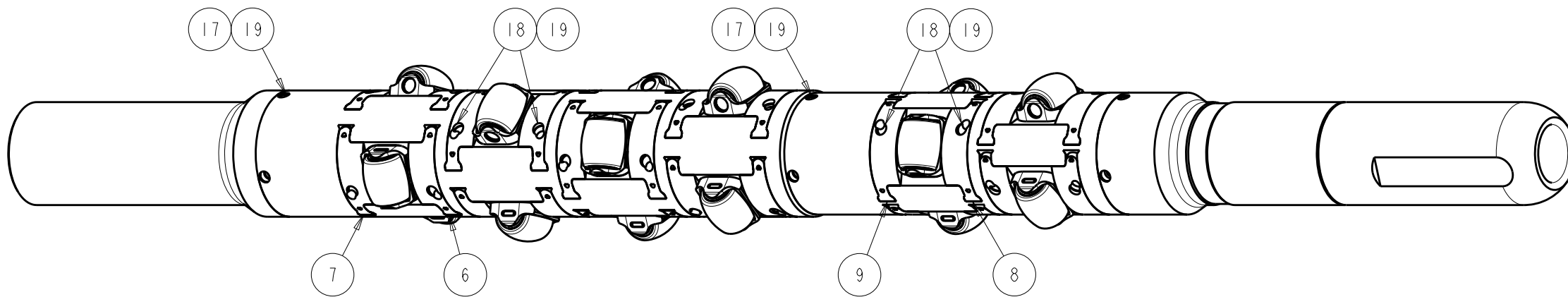


SECTION A-A



DETAIL A

ITEM	QTY	DESCRIPTION
1	1	ACE TOOL UPPER BODY, 148mm MAX. OD
2	1	ACE TOOL LOWER BODY, 142.9mm MAX. OD
3	1	CROSSOVER; 3.5" IF to STUB ACME
4	1	EXPANSION MANDREL CROSSOVER
5	1	ACE TOOL BULLNOSE
6	12	LOWER RETAINER PLATE (UPPER BODY SECTION)
7	12	UPPER RETAINER PLATE (UPPER BODY SECTION)
8	6	LOWER RETAINER PLATE (LOWER BODY SECTION)
9	6	UPPER RETAINER PLATE (LOWER BODY SECTION)
10	18	ROLLER CARRIER
11	18	ROLLER
12	18	ROLLER AXLE
13	18	TOUGHMET BEARING
14	36	TOUGHMET SUPPORT WASHER
15	1	NOZZLE RETAINER

ITEM	QTY	DESCRIPTION
16	1	11/32" NOZZLE
17	12	METRIC CAP SCREW HEX SOCKET
18	36	3/8-16 UNC SHOULDER SCREW HEX SOCKET
19	48	INTERNAL CIRCLIP - 14mm
20	18	INTERNAL CIRCLIP - 18mm
21	1	INTERNAL CIRCLIP - 45mm
22	1	O-RING 122 FKM 75
23	18	O-RING 232 HNBR 90
24	3	O-RING 240 FKM 75
25	1	O-RING 127 FKM 75
26	1	7/8" STEEL BALL (NOT SHOWN)
27	1	NOZZLE ASSY TOOL f/ ACE TOOLS (NOT SHOWN)
28	18	PARBAK RING PB-232-HN90
29	1	ASSEMBLY AID f/ CARRIER ASSY (NOT SHOWN)
30	1	JETLUBE GREASE (NOT SHOWN)



DRAWN BY/DATE watsonkx/05-06-06	SHEET 1 OF 1
CHECKED BY/DATE thaintx/12-06-06	
APPROVED BY/DATE --/--	WEIGHT 202.048

<small>© Weatherford 2010. All rights reserved. This document is copyrighted and whether containing patentable or non-patentable subject matter is and comprises the proprietary and confidential information of Weatherford International Ltd, and by receiving this document the recipient agrees that this document is loaned in confidence with the understanding that neither it nor the information in it will be reproduced or disclosed, in whole or in part for any purpose except the limited purpose for which it is loaned. This document and any facsimiles hereof shall be returned to Weatherford International Ltd upon demand.</small>		
TYPE AS	PART NO. 00792313	REV F
DRAWING NO. 572-5502-000-001		
TITLE / DESCRIPTION 5.5" ACE TOOL ASSEMBLY 5.827" OD w/ DOVETAIL RETAINERS		

ECN No	REV	DATE	BY	CHECK	REASON FOR REVISION / CHANGE
55221	F	14/01/08	wallacsc	govedx	PB O-ring temp rating increased.
00000	E	01-11-07	watsonkx	clarkmx	W'CHILL COMP. + BOM TABLE ADDED
00000	C	05-06-06	watsonkx	thaintx	--

DRAWING STANDARDS		TOLERANCES (DRIVEN BY METRIC SIZE)		UNLESS OTHERWISE STATED	
DRAWING UNITS mm [inch]	SCALE: 1.000	METRIC SIZE	IMPERIAL EQUIVALENT	1 SURFACE FINISH 3.2µm Ra [125 µi]	2 BREAK SHARP EDGES 0.35 [0.014]x45°
		X ±0.500	[X.XXX ±0.020]	3 ALL ANGLES 30° FROM HORIZONTAL	4 TIR 0.25 [0.010]
		X.X ±0.350	[X.XXX ±0.014]	MATERIAL : -- --	COATING : --
		X.XX ±0.080	[X.XXX ±0.003]	HT TREAT : --	REV/VER : F / 0+
		X.XXX ±0.025	[X.XXX ±0.001]		
		ANGULAR X ±3°	X.X ±0.5°		