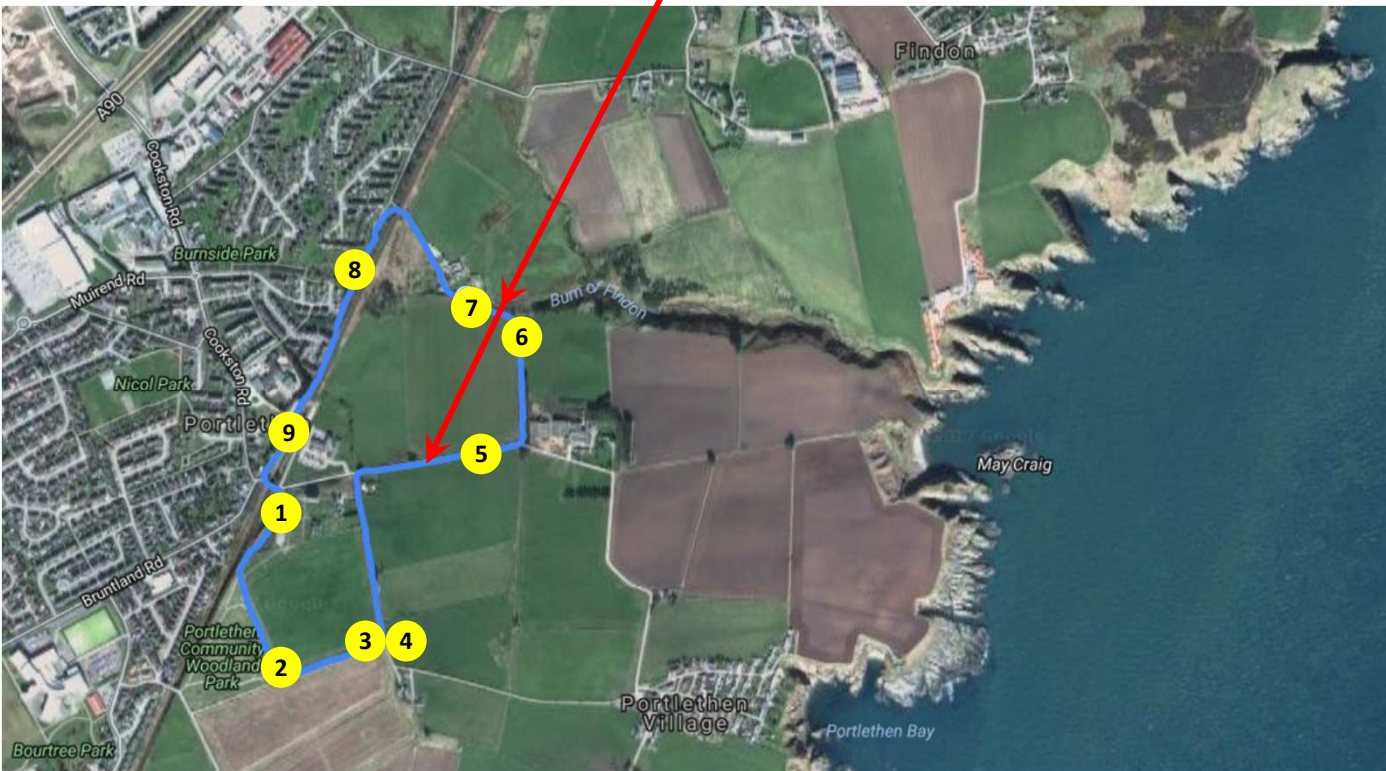


# Portlethen and District – Walking Routes

Take care: no pavement  
here on these 60mph roads



Route Map:  
Screengrab from



9 Indicates where a photo has  
been taken – see page 2



A 1.6 mile / 2.57 kilometre wander – taking 30 to 45 minutes

Most of this route is on paths and tracks. **Care should be taken on two roads (as noted on map)**

For this walk, the start/end point is the Portlethen Church car park (1). Head out of this car park, through a small copse of trees which lies parallel to the railway, then into the Portlethen Community Woodland Park. Pass southwards through the park (2), then head up (eastwards) and along the small private road (3)+(4). Heading down the track, past the mobile phone mast, to the end (getting near the medical centre), turn right as if heading towards Old Portlethen. Taking care on this road, head onwards (5), then turn left at the old “Tennent’s Lager” sign for “The Neuk” pub. Carry on, passing The Mill of Findon (6)+(7). Pass underneath the railway line, turning left, parallel to the railway. Carry on along the path, passing the “Adventure Trail” (8) and hopefully the site of the “Pensioners Playground” (if it gets funding). Continuing onwards, through a very narrow path that is getting overgrown – although the more people that use it, the clearer it will get. This path comes out at the railway station, with the end point, at Portlethen Church, now in sight (9).





Start: Portlethen Parish Church



Portlethen Woodland: views westwards to the Academy, Boswell's Monument, Durris Transmitter, Meikle Carewe wind farm etc.



Above Portlethen Woodland: views northwards past the Church and Hillside School to Brimmond Hill (near Aberdeen Airport)



Above Portlethen Woodland: view north-east towards Findon and Findon Moor



Virgin Trains East Coast, an old 125 heading from Aberdeen to London King's Cross



Looking towards Mill of Findon and the railway line



Mill of Findon – at the mill pond there can occasionally be seen a couple of Herons and, now and then, a deer



The children's Adventure Trail – and possibly the location of the proposed Pensioners Playground



Portlethen Parish Church seen from the railway station