

The noticeboard/seat was designed and built for the community of Portlethen by a group of OPITO Modern Apprentices as part of the OPITO Trainee Challenge.

The apprentices are currently students/trainees at Aberdeen College and they carry out their skills training at Aberdeen Skills and Enterprise Training Limited (ASET), which is a wholly owned subsidiary company of Aberdeen College.

The trainee challenge was for them to design and build something that would benefit a group or community using the hand skills that they had gained as part of their training and using materials that they would use when working offshore, at the end of their training, as Maintenance Technicians.

I'm sure you'll agree that this structure is very well designed and built and it will be well used by our community.

See the pictures included of the OPITO Modern Apprenticeship Trainees who designed and built this for us.



*Portlethen Moss
Conservation Group*





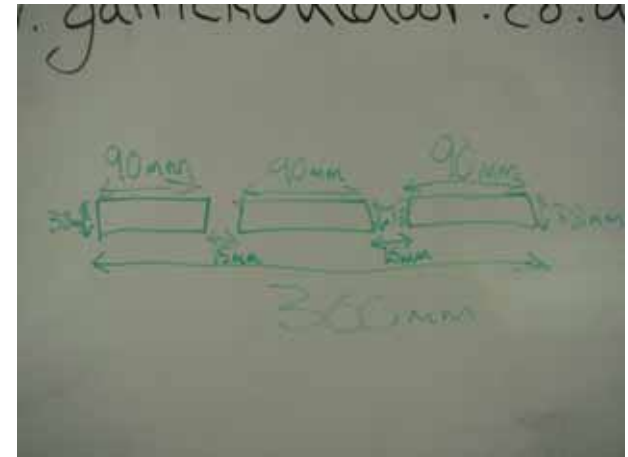
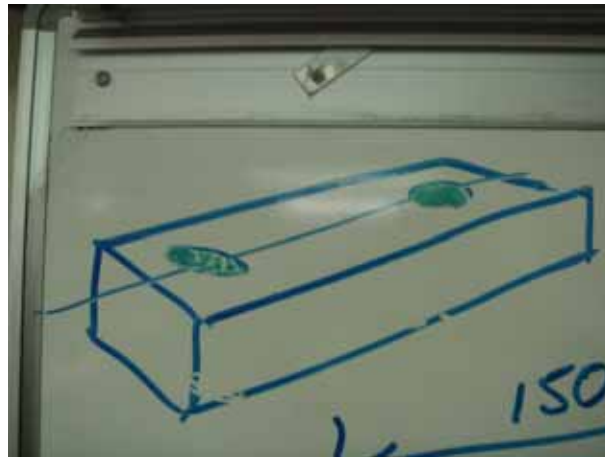
Portlethen Moss Project 2008



The Site



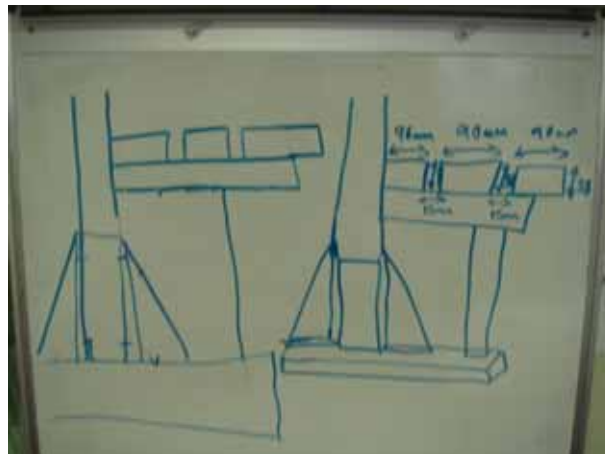
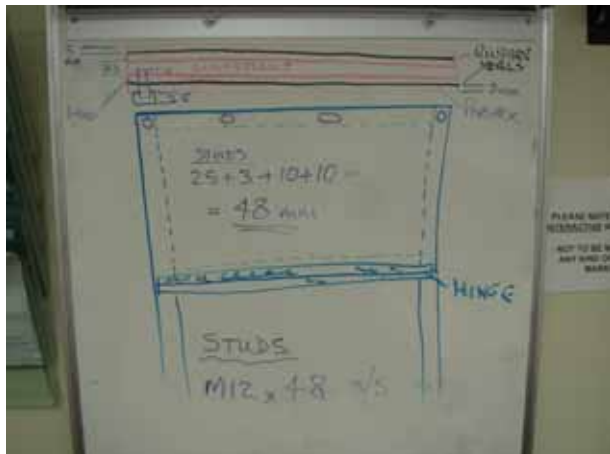
Existing notice board



We drew our ideas on the board and discussed them as a group



1	PROJECT START-UP MEETING	1.0
2	DESIGN 'WORD STORMING'	2.0
3	RESEARCH BASE & SECURING ARRGT	5.0
4	RESEARCH FRAME ARRGT	5.0
5	RESEARCH NOTICE BOARD ARRGT	5.0
6	RESEARCH SEATING ARRGT	5.0
7	PRICING OF OPTIONS	3.0
8	APPROVALS	10.0
9	ORDER MATERIALS	8.0
10	CHECK MATERIALS ON ARRIVAL	4.0
11	CUT & SHAPE	8.0
12	TRIAL ASSEMBLY	3.0
13	CONCRETE BASE	3.0
14	ASSEMBLE STRUCTURE	8.0
15	COLLECT 1 ST PLACE PRIZE	



Planning the work diary



A unistrut frame in the ASET workshop gave us the idea of making the notice board from unistrut



Unistrut is widely used offshore. It is very simple to construct and very strong.



The plastic to be used for the seating



We bought the plastic from a company called Filcris Ltd. It is recycled plastic and is almost guaranteed to withstand all weather conditions which is needed for the notice board



The tools we bought



Preparing the shuttering for the base



The IP55 rated notice board



Building the base at the moss.



The tools were good quality and very useful as the ground was hardcore



Shuttering for the postcrete





We covered the holes with tarpaulin after we had finished the base to protect them from getting wet.



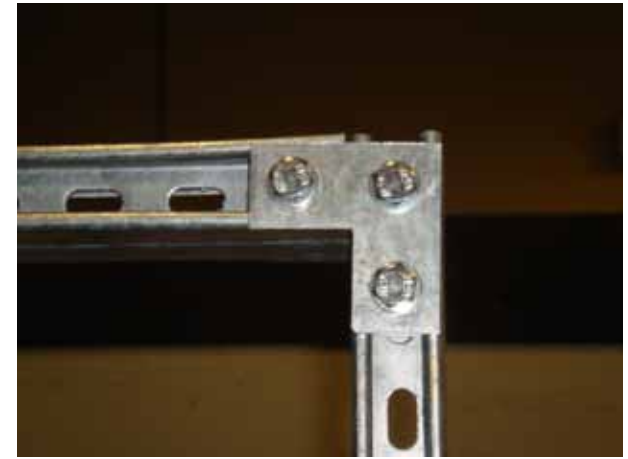
Measurements had to be precise



The trial assembly



M12 bolts were used to secure the plastic to the unistrut



Fittings called Zebedee's were used to join pieces of unistrut together





The hardboard was coated with wood shield to make it weatherproof



The finished notice board



We unbolted the seats from the main frame so it would be easier to transport in the minibus To Portlethen



The tarpaulin was taken off the base



The seating was attached to the main frame again



Project complete!



*Portlethen Moss
Conservation Group*



Portlethen Moss Conservation Group



www.portlethen-moss.org.uk

Who We Are and What We Do

The Portlethen Moss Conservation Group is made up of members from within the community of Portlethen. We have been a fully constituted group since June 2007 and are awaiting charitable status. We are supported by and work closely with Aberdeenshire Council and its Ranger Service, Scottish Natural Heritage (SNH), the Forestry Commission, the community and the three local schools within Portlethen.

Portlethen Moss is an area of natural raised acidic bog which supports a variety of plant and animal species; however over the years the area has been subject to certain development pressures and as a consequence much of what was the Moss has now been lost. As a result of this the group was formed to work towards preserving what is left of this environmentally sensitive area and to work towards gaining Local Nature Reserve (LNR) status.

The area you are standing in is owned by Aberdeenshire Council and you'll note that this is the only area that we have been able to make improvements to. Funding from the Forestry Commission's Woodlands in and Around Towns (WIAT) scheme has enabled us to make these improvements which consist of the all abilities paths, the tree planting and the gorse control.

The ultimate aim of the group is to get Local Nature Reserve (LNR) status for the Moss and for this we work closely with and are fully supported by Aberdeenshire Council. However we are still in the process of endeavoring to enter into talks with the various landowners of the other areas of the Moss and until they agree to enter into a Management Agreement with the group and Aberdeenshire Council we are unfortunately unable to carry out any improvements or conservation work in these areas.

The group has recently taken on board a second major environmental project - the creation of a Community Woodland within Portlethen in an area which is currently owned by Aberdeenshire Council which is located just over the railway bridge on the Downies Road, adjacent to the Church at the North end of the site. A letter was sent Mr. William Munro, Area Manager, Aberdeenshire Council in July 2007 requesting the Council to consider the groups aspirations for the area and as a result we now have full backing for this project.

Planning permission has been granted and the first stages of the transformation have taken place by way of pathways and entrance gates - now complete. The Forestry Commission and Aberdeenshire Council are working closely with us and the Forestry Commission is coordinating the three local schools involvement in the creation and design of the area. The first stage of tree planting is planned for 2009.

The Portlethen Moss Conservation Group endeavours to raise funds for both of the above projects and we have been fortunate to receive funding from the WIAT as mentioned above and the companies Talisman and Petrofac. However the Moss requires constant maintenance such as gorse control; care for 2,000 newly planted trees and the hedgerow at the main entrance to name but a few and the Community Woodland site is a huge and exciting project in its very early stages. Both projects are of benefit to the community, education and biodiversity and the group will continue to work to raise funds to maintain these projects.

If you would like to become a member of the group or help out at any events please contact us via our website [**www.portlethen-moss.org.uk**](http://www.portlethen-moss.org.uk)